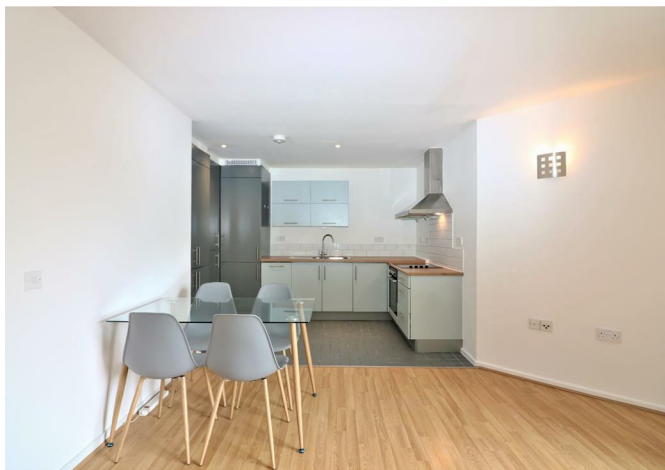


Franklyn James



51 Narrow Street, E14 8DN

£2,000 Per Calendar Month



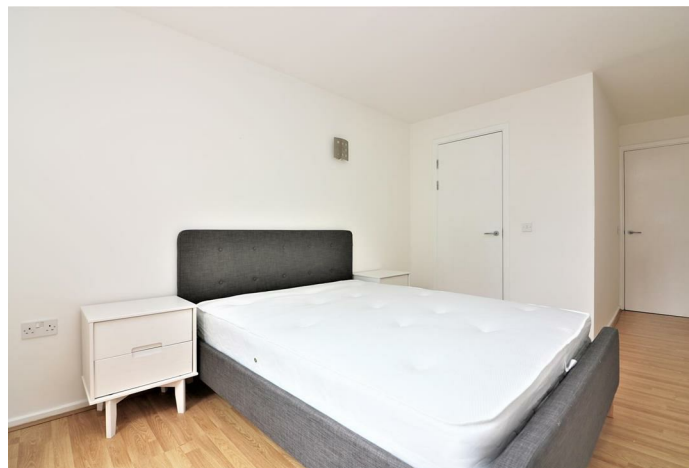
51 Narrow Street, E14 8DN

£2,000 Per Calendar Month

A modern one bedroom apartment situated in the popular Mosaic development in Limehouse. The property benefits from an open plan lounge and kitchen, balcony with views over the courtyard, large double bedroom with built in wardrobes, contemporary bathroom, wooden floors throughout, 24 hour concierge and is within walking distance of Limehouse DLR station and Canary Wharf.

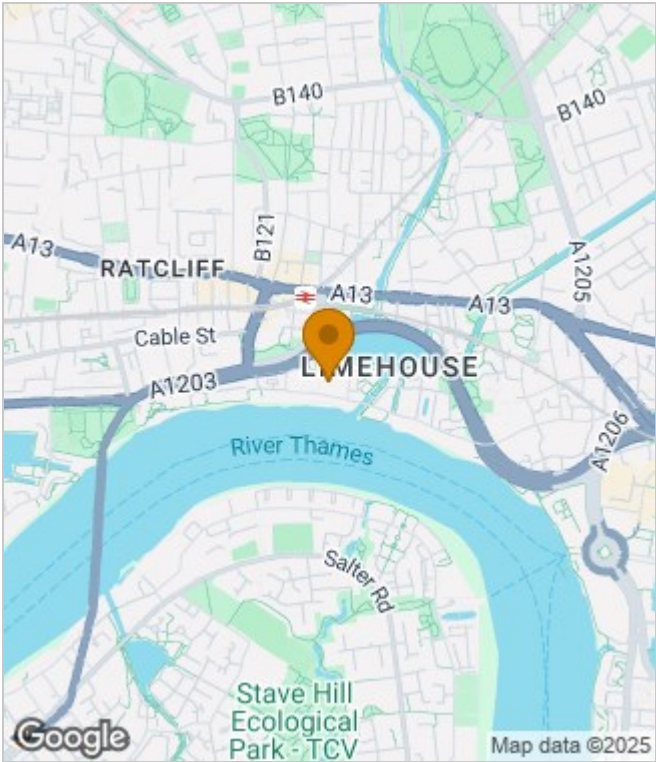
Description

- Furnished
- One spacious large double bedroom
- Open plan reception and kitchen
- Private balcony
- 24 hour concierge
- Ample storage
- Built in wardrobes
- Easy access to Canary Wharf and The City
- Walking distance of Limehouse DLR station
- Popular development located in charming Narrow Street

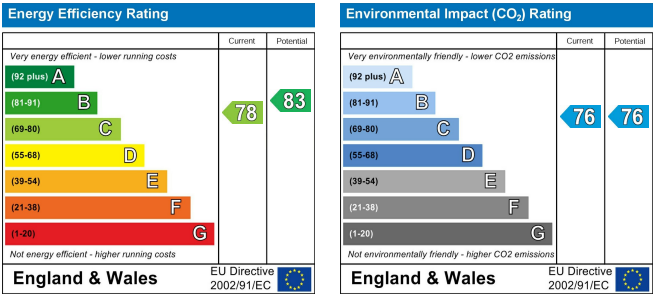


Furnished
Council Tax Band: D
Available: 7th October 2025

Area Map



Energy Performance Graph



These particulars, whilst believed to be accurate are set out as a general outline only for guidance and do not constitute any part of an offer or contract. Intending purchasers should not rely on them as statements of representation of fact, but must satisfy themselves by inspection or otherwise as to their accuracy. No person in this firms employment has the authority to make or give any representation or warranty in respect of the property.

Franklyn
James

29 Narrow Street, London, E14 8DP
Tel: 02077911777 Email: lettings@franklynjames.co.uk <https://www.franklynjames.co.uk>